

TORO.

Count on it.

Groundsmaster® 360
Quad-Steer™



**Seriously advancing
the way you cut grass.**





We're taking productivity in a whole new direction.

Winning the world over.

The Toro Groundsmaster® 360 Quad-Steer™ has been getting rave reviews at parks and golf courses from the US and Canada to Australia and Germany—which is where Sergej Alexnders took his test drive. According to Sergej, the Groundsmaster 360 Quad-Steer takes productivity to a whole new level. “It’s more maneuverable. When there are obstacles like trees, you don’t have to do hand trimming afterward. You don’t need to drive backwards, you can just keep moving forward and do it all in one go. You can do more, and get more done with this machine.”



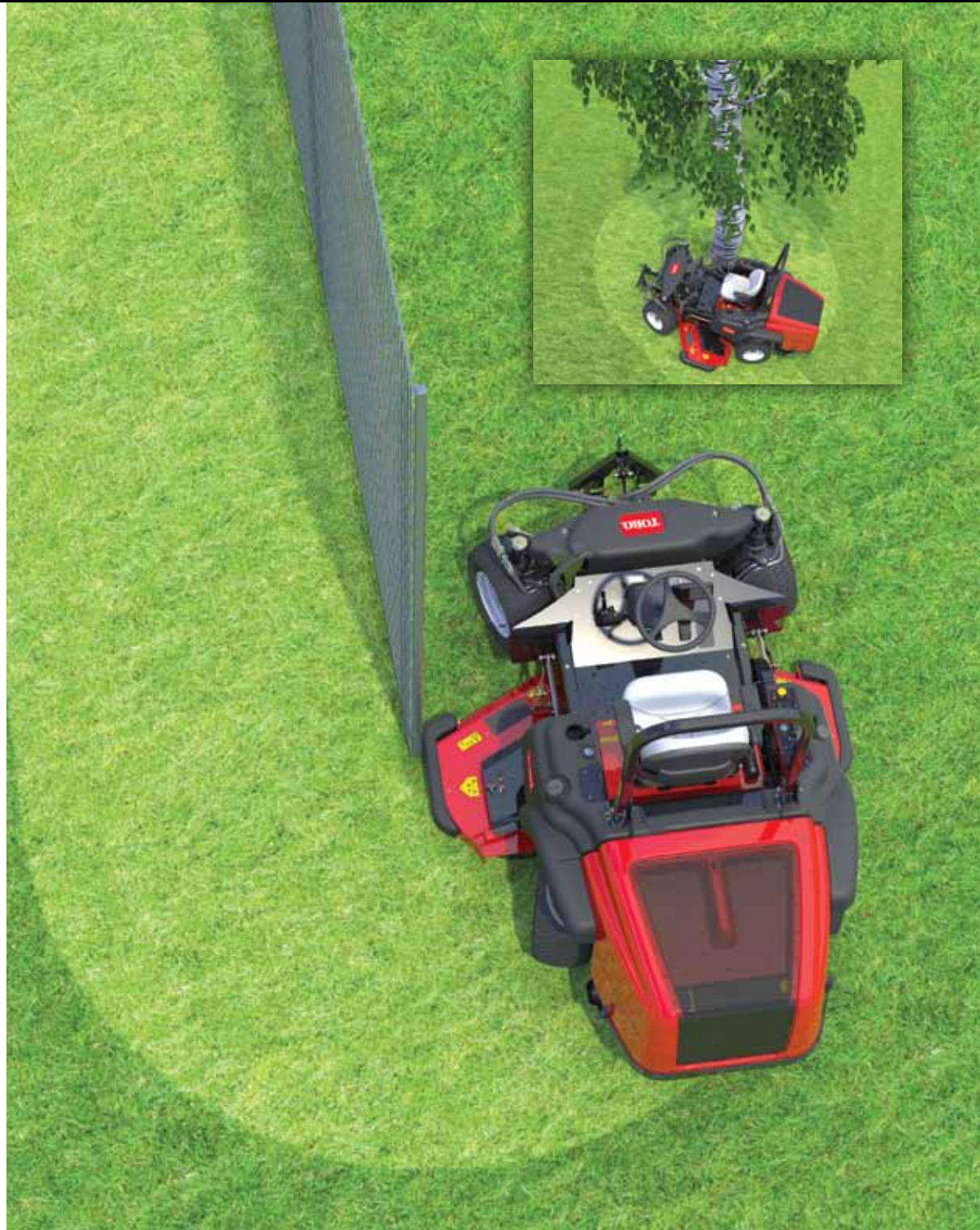
The Groundsmaster 360 turns a new corner in turf maintenance with revolutionary Quad-Steer™ all-wheel steering.

The new Groundsmaster 360 Quad-Steer drives circles around other mowers.

You have to drive it to believe it. The Groundsmaster 360 is engineered with Quad-Steer™ technology, for true all-wheel cornering. When turning the steering wheel, the inside and outside tires pivot around a common point so you can make tight turns or trim around obstacles without turf damage. What's it feel like? Imagine sticking a pencil in the ground and trimming around it 360 degrees without worrying about tearing the turf. Not only that, but the Groundsmaster 360 Quad-Steer is remarkably easy to operate. Just about anyone can easily operate it and do a superior job with minimal training.



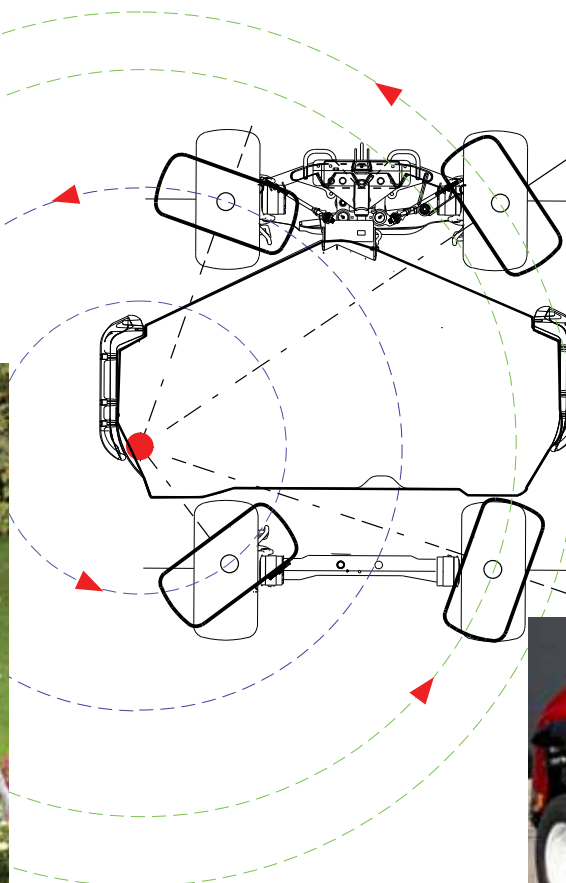
The back of the mower follows within the width of the deck, making it easy to trim around trees, poles or along fences without hitting the mower's rear end.



Built like a Groundsmaster

All-Day, All-Terrain

Don't be fooled by its nimble turning response; this new Groundsmaster is a workhorse through and through. It's engineered with all the rugged features that built the Groundsmaster reputation for nonstop performance, plus innovations that will really boost your productivity.



A New Angle On Operator Safety

By combining the responsiveness of Quad-Steer control with a wider wheel stance, we created a mower that can scamper up steep slopes, trim 360-degree circles around objects on side hills, and still maintain optimal traction and control.

Get the Quad-Steer Advantage

All four wheels pivot around the same point in the Quad-Steer system so you can make tighter turns without injuring the turf. And, because it uses a standard steering wheel instead of stick steering, the Groundsmaster 360 is easy for new operators to learn how to drive.



Scales Curbs In a Single Bound

One of the most impressive features about the Groundsmaster 360 according to Andrew Sterling of Sydney, Australia, is how effortlessly it climbs curbs, thanks to the pivoting front axle and high ground clearance. "In the past, we've blown out tires and damaged rims," he says. "I can't see any of that happening in the future with this machine, and that will save us a whole lot of downtime."



Power Through Your Toughest Jobs

Shift your productivity into high gear with this 36 hp Kubota® 4-cylinder, liquid-cooled, diesel engine. It not only has all the horsepower and torque you need to handle your most difficult mowing conditions, it simplifies routine maintenance with quick, tool-free access to regular service points, and common parts across the Groundsmaster line.



Quick Change Artist

A simple hole and pin system lets you easily change the height of cut from 1"-6" in ¼" increments. You can temporarily lift the deck to avoid roots, litter or other obstacles, and a transport setting lets you raise the deck over 6."



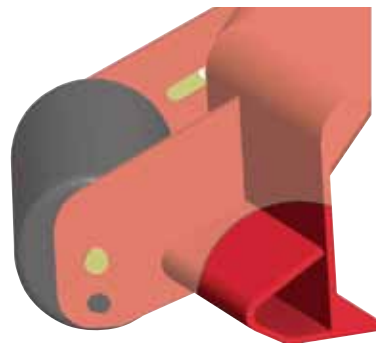
Tougher Than the Rest

The cast iron spindle housings on the Groundsmaster® 360 feature a massive 9" diameter base and spreads impact loads across a broader area. Dual tapered roller bearings last up to six times longer than ball bearings. The spindle shaft is made of ¼" (32 mm) hardened steel and is 25% thicker than competitive spindles. The result is unsurpassed stability and strength for longer deck and spindle life.



We Stacked the Decks In Your Favor

Its 72" Guardian® Recycler® deck is engineered with a patented, vertical discharge system that forces clippings to be cut and re-cut, for better clipping management and safety. The 72" rear discharge deck powers through tall or thick grass without discharging clippings outside the cutting path. Finally, the 72" side discharge deck delivers a lightning fast blade tip speed of 18,000 fpm (feet per minute), assuring a cleaner cut without sacrificing mowing speed.



Bullish On Durability

A unique bull-nose bumper protects the cutting deck's leading edge and minimizes blowout of grass and dust. The leading edge is also raised ¼" so grass stands up straight for a cleaner cut.



Engineered to Take the Heat

You don't have to worry about overheating slowing your operators down. The Groundsmaster 360 has a plenum cooling system under the hood that pulls air into the radiator and engine compartment, even under dusty conditions. If the rear screen is blocked with debris, cool air is drawn from the top to prevent overheating.

The Power to Mow More In Less Time

Forget about all the obstacles that used to slow you down on mowing day. The 2-Wheel Drive Groundsmaster 360 Quad-Steer quickly sails around rocks, trees or anything else in its way, with virtually zero trim. You can keep right on moving, instead of going back to make another cleanup pass. And, because the rear end follows within the width of the deck, you can mow in and out of tight areas without damaging turf, equipment or property, or breaking a sweat.



Redefining “Easy to Operate”

The Groundsmaster 360 is designed to put your operators in control of their comfort and safety. The steering tower, seat and armrests adjust to individual preferences in seconds. The operator seat is isolated with rubber mounts that absorb jarring vibrations that can strain an operator's back and shoulders. All the essential controls are fingertip-accessible. Even the height of cut can be quickly changed with a simple hole and pin system.



Behind-the-seat storage for weather gear, tools, gloves or a snack.

2-Wheel Drive



- Quad-Steer™ all-wheel steering
- 36 hp Kubota 4 cylinder diesel engine
- 72" (183 cm) cutting width
- Side discharge Guardian® Recycler®, or rear discharge deck options
- 7-gauge welded steel cutting decks
- Integrated direct-drive transmission with hydraulically actuated wet multi-disc PTO clutch
- Mowing/transport speed range: 0 – 14 mph (0 - 23 km/hr)
- Optional differential lock kit
- Optional speed reduction kit



Versatility is Its Middle Name

When Kim Hansen of Batavia, Illinois, had a chance to test drive the new Groundsmaster 360, she quickly saw all kinds of ways it could make her more productive. "Right away I thought, wow, you could use this to mow regular park areas with flat terrain. And then, you could also take it into the rougher areas, and raise up the deck to do a rough cut. But once we got to the hills, let's just say, I've never seen another mower that performs like it does on the hills." Sounds like she's found the one mower that really does it all.

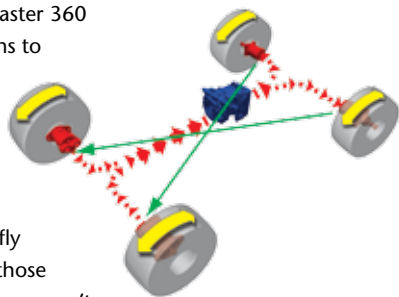
Maximum Control. Maximum Traction. Maximum Productivity.

Think of the 4-wheel drive Groundsmaster 360 Quad-Steer as the big mower that drives small. It has a huge appetite for devouring grass, but when you need the precision of a smaller mower, it zips in and around, and gets the job done faster than any mower its size. It's also designed to cut your maintenance costs, with a multi-disc wet clutch that lasts longer than conventional clutches, and a direct-drive transmission that requires less service.



More Grip. Less Slip.

CrossTrax® all-wheel drive comes standard on the Groundsmaster 360 4WD. It automatically senses when one of the rear tires begins to slip, and instantly transfers power from the rear to the opposite front wheel, so you can confidently keep on mowing. What's the best way to experience the power of CrossTrax®? Look for the worst place you have to mow. Go to the area where other mowers get stuck, or where it's very tight and your other mowers hit things. As soon as you fly through there with this mower, you'll suddenly have one of those "a-ha moments," when you realize this machine does things you can't do with your other equipment."



Steering Lockout For High-Speed Control

The 4-wheel drive Groundsmaster 360 lets you lock the rear wheels straight, for car-like front wheel steering when the unit is driving at higher road speeds or mowing a long, straight run.

4-Wheel Drive



- Quad-Steer™ all wheel steering
- 36 hp Kubota 4 cylinder diesel engine
- 72" (183 cm) cutting width
- Side discharge Guardian® Recycler,® or rear discharge deck options
- 7-gauge welded steel cutting decks
- Integrated direct-drive transmission with hydraulically actuated wet multi-disc PTO clutch
- CrossTrax® all-wheel drive
- 2-wheel steer transport mode – rear wheels lock straight for driving like a car
- Mowing/transport speed range: 0 – 14 mph (0 - 23 km/hr)
- Optional front Quick Attach System for seasonal attachments
- Optional speed reduction kit



King of the Hill.

Ken Shepherd of Lockport, Illinois, says he's never seen anything like the traction and control of the new Groundsmaster 360. "I was really surprised by how well it climbed our sled hill, they were climbing straight up and that mower wasn't even sweating. I couldn't believe it." Ken was equally impressed by the Groundsmaster 360 on the way down. "When the mower started to turn, I thought 'Wow, I hope that thing doesn't roll.' But the operator was totally in control all the way, which is exactly what Ken looks for in a mower, and his crew.

All-Season Performance, 365 Days of the Year

The ultimate Groundsmaster 360 Quad-Steer is the one you can use year round. Meet the Groundsmaster 360 Quad-Steer 4WD with an all-season safety cab. Its rollover protection certified cab keeps your operators safe and comfortable in all kinds of weather. What could be better? How about adding the optional front Quick Attach System (QAS), so one person can change seasonal attachments like a snow thrower, rotary broom or angled snow blade in less than a minute, with no tools required. Talk about versatility!



Let Neither Rain, Nor Sleet, Nor Snow Stop Your Operators

It's always a perfect day for mowing, sweeping or clearing snow when you're inside the cab of the new Groundsmaster 360. This permanent, fully enclosed cab has four-post rollover protection and tempered safety glass. A climate-control system with AC and heat protects operators from the elements. Rear and side windows open for ventilation. When the weather turns bad, a front windshield wiper and washer ensure good visibility. Cloth Grammer seat with air ride suspension comes standard.

4-Wheel Drive with All-Season Safety Cab



- Quad-Steer™ all wheel steering
- 36 hp Kubota 4 cylinder diesel engine
- 72" (183 cm) cutting width
- Side discharge Guardian® Recycler®, or rear discharge deck options
- 7-gauge welded steel cutting decks
- Integrated direct-drive transmission with hydraulically actuated wet multi-disc PTO clutch
- CrossTrax® all-wheel drive
- 2-wheel steer transport mode – rear wheels lock straight for driving like a car
- Mowing/transport speed range: 0 – 14 mph (0 - 23 km/hr)
- Permanent, all season safety cab with A/C and heat
- Cloth Grammer seat with air ride suspension
- Optional front Quick Attach System for seasonal attachments
- Optional speed reduction kit

Seasonal Attachments



More Versatile.

Use one machine to do it all. The Groundsmaster 360 Quad-Steer 4-wheel drive model has the optional Quick Attach System for front attachments. One person can change over attachments in less than a minute, no tools required.



Rotary broom (MB Companies)



Fixed V-plow (Toro)



Snow thrower (Erskine Attachments)



Angled Snow blade (MB Companies)



Powered V-plow (MB Companies)

Groundsmaster® 360 Quad-Steer™

Model	GM360 2WD	GM360 4WD	GM360 4WD w/cab
Engine	Kubota* 1505 4-cylinder, liquid-cooled diesel engine, 36 hp (26.8 kW) @ 3000 rpm		
Traction Drive	Independent high-torque, low speed wheel motors with 277 cc displacement.		
	Dual pump hydrostatic drive system with optional differential lock.	CrossTrax* drive system utilizing series parallel hydraulic drive with full time forward and reverse 4WD. Patent pending.	
Steering	Quad Steer™ all wheel steer with four wheel Ackermann steering. Two turns Lock to Lock controlled via steering wheel and automatic synchronizing hydraulic cylinders. 4WD models have rear wheel steer lock out position, providing front two wheel steering (2WS).		
Fuel Capacity	13.5 gallons (51.1 Liters) diesel. Biodiesel Ready for use up to B-20 (20% biodiesel and 80% diesel blend).		
Ground Speed	Transport and Mow: Forward 0-14 mph (0-23 km/h), variable. Reverse 0-8.5 mph (0-13.7 km/h), variable.		
Mowing Capacity	4.9 acres/hr (2.0 ha/hr) @ 8 mph (12.9 km/hr)		
Fuel Economy	3.5 acres/gallon (.38 hectares/liter)*, fuel consumption: 1.4 gallons/hr (5.3 liters/h)*		
PTO Clutch	Hydraulically actuated wet multi disc clutch.		
Certification	Certified to meet SAE J2258. Certified to meet ISO/DIS 21299 for ROPS. Engine meets all applicable emission standards per the manufacturer. Certified to meet C-Tick 2004/108/EC/(EMC). Certified to meet the CE Machinery Directive.		
Accessories	Sunshade, Speed Reduction Kit, Road Light Kit, Differential Lock.	Sunshade, Speed Reduction Kit, Front Quick Attach System, V-plow, Rotary Broom, Road Light Kit, Snow thrower, Angled Blade	

Model	GM360 2WD	GM360 4WD	GM360 4WD w/cab
Height ROPS Up	78" (198 cm)	78" (198 cm)	86" (218 cm)
Overall Length	95" (241 cm)	95" (241cm) / 117" (297 cm) with front Quick Attach System™ (QAS) only	
Overall Width	78" (198 cm) [72" (183 cm) base deck] / 75" (191 cm) [72" (183 cm) side discharge deck] / 55" (140 cm) wheel to wheel		
Wheelbase	57" (145 cm)		
Est. Shipping Weight	2,562 lbs. (1,162 kg)	2,658 lbs. (1,206 kg)	3,134 lbs. (1,422 kg)
All-Season Safety Cab	Factory installed, ROPS certified, pressurized cab with AC and heat. Tempered curved windshield, opening side window acts as an emergency exit, opening rear window, tinted side and rear glass; front wiper/washer; interior mirror and exterior side mirrors; SMV sign; interior dome light. Models 30540, 30541 & 30542 only.		
Safety	Complies with American National Standards Institute (ANSI B71.4-2004)		

Cutting Decks

72" Side Discharge Const.	7-gauge (4.5 mm) 5.5" (14 cm) deep; welded steel deck with grass discharged on the right side. An ³ / ₁₆ " (8 mm) thick rubber discharge chute covers the discharge opening to limit the throw distance of clippings.	
72" Base Deck Const.	7-gauge (4.5 mm) 4.25" (11 cm) deep welded steel deck.	
Width of Cut	Base: 72" (183 cm) with Guardian® Recycler® kit, fine cut Guardian Recycler kit, or rear discharge kit.	Side Discharge (non-CE): 72" (183 cm)
Height of Cut	1" - 6" (25 - 152 mm) adjustable in 0.25" (6 mm) increments	

* Dependent on operator and turf conditions. Assume 85% efficiency for turns and overlap; and 8 mph (12.9 km/hr) mow speed. Specifications subject to change. Please contact your Toro distributor for details.

The Toro Groundsmaster meets the specifications of your toughest jobs. For more detailed information, visit www.toro.com.

TORO® PROFESSIONAL SERVICES

Toro Financing A full-service offering for all your equipment and irrigation purchases. Flexible financing options can be tailored to meet your operational needs.

Toro Protection Plus Extended Protection Plan Protect your budget and your equipment investment. Plans are available for both new and used equipment, and you can choose from various terms to fit your financing terms.

Toro Genuine Parts Keep the productivity and performance of your equipment at its peak. Learn about Performance Parts pricing and MVP kits. Find replacement parts online at Toro.com/partsviewer.

Toro Training Toro Factory Service Schools are available. Explore the training and customer care areas of Toro.com and ToroNSN.com for readily available education and training materials.

Toro Controller Repair Provides irrigation controller boards ready for immediate board exchange to assure that downtime is minimal and your turf stays protected. Toro is the choice for reliability.

Toro NSN® An industry-first support network that provides reliable, around-the-clock irrigation central control system troubleshooting and operation assistance. Call 1-800-ASK-TORO.

myTurf™ Fleet Management This on-line tool from Toro keeps track of maintenance for all of your turf equipment. Complete product information and parts ordering is also included. Ask your distributor for availability.